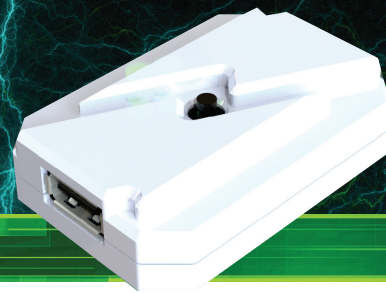


# CHARGE<sup>TM</sup>CHECK

## ADVANCED FEATURES



*Charge-Check* improves battery longevity of rechargeable devices requiring a 5V USB charger. While *Charge-Check* was designed for mobile devices (like cellular phones and tablets), any rechargeable device with a 5V USB charger (such as blue-tooth wireless speakers) may also benefit.

*Charge-Check*'s purpose is to periodically "top-up" a device's battery to minimize overcharging. Once a charging cycle has started, *Charge-Check* will monitor the device and charge the battery until the battery is sufficiently "topped-up" (up to a maximum of 4 hours). At this point, it will suspend charging for a set length of time (by default 3 hours) before attempting to "top-up" the battery again.

Since *Charge-Check* was intended for a number of different applications, this default 3 hour timeout may not be appropriate for some uses. As a result, it is designed to be configurable, allowing users to modify the length of time between "top-ups", or disabling "top-ups" all together. The following will guide you through the advanced configuration feature of *Charge-Check*.

### *Charge-Check Timeout Mode Configuration*

The modes on *Charge-Check* give the user the ability to configure a timeout length between "top-ups" of 1 to 5 hours with the exception of the "Single Charge" mode, which disables the "top-up" feature. In "Single Charge" mode, any additional charges of the device will need to be manually restarted by pressing the black button on the *Charge-Check* unit.

Configuration of *Charge-Check* is done using the black button located on the unit.

See the table below for all available modes. To select any of the available modes, follow these steps:

1. Press the black button on the *Charge-Check* unit (press and hold for ~1 second) the specified number of times.
2. Hold down the black button for 10 second in order to store the changes.



When holding the button for 10 seconds, *Charge-Check* will confirm the mode change is in progress by flashing the LEDs back and forth for several seconds. The LEDs will confirm that the mode has been changed by then blinking to display the selected mode (for example: 2 blinks would indicate 2 hour timeout mode).

MODE	SELECTION	ACTION
1 hour timeout	Press button once, followed by a 10 second hold	1 hr discharge between top-ups
2 hour timeout	Press button 2 times, followed by a 10 second hold	2 hr discharge between top-ups
3 hour timeout	Press button 3 times, followed by a 10 second hold	3 hr discharge between top-ups
4 hour timeout	Press button 4 times, followed by a 10 second hold	4 hr discharge between top-ups
5 hour timeout	Press button 5 times, followed by a 10 second hold	5 hr discharge between top-ups
Single Charge	Press button 6 times, followed by a 10 second hold	Charge device once, top-ups disabled

---

## Advanced Charge-Check Settings

In addition to the standard modes, there are several advanced settings available on *Charge-Check*.

### Display Current Mode

This setting provides a way of visually verifying the current selected mode without having to reconfigure *Charge-Check*.

To “Display Current Mode” you will need to follow these steps:

1. Ensure that *Charge-Check* is powered on.
2. Hold down the black button on the *Charge-Check* unit for 10 seconds, until the LEDs begin flashing back and forth for several seconds, and continue holding the black button.

Once the LEDs stop flashing the LEDs will then blink to display the current mode (for example: 2 blinks would indicate 2 hour timeout mode).

---

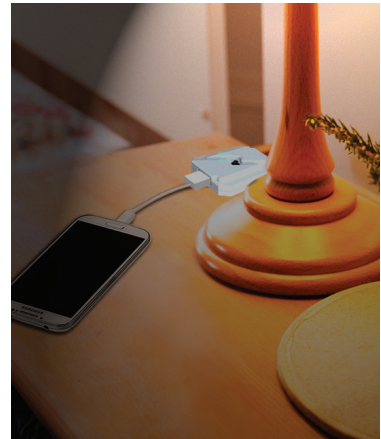
### Day Mode/Night Mode

By default, the LEDs will slowly pulse whenever *Charge-Check* is charging. Since most users charge their devices overnight, or beside their beds, this mode makes it possible to disable, or enable, the LEDs during a charge.

To toggle between “Day Mode” and “Night Mode” you will need to follow these steps:

1. Ensure that *Charge-Check* is powered on.
2. Press the black button on the *Charge-Check* unit at least 7 times.
3. Hold down the black button for 10 seconds, until the LEDs begin flashing back and forth for several seconds, and continue holding the black button.

Once the LEDs start flashing, they will continue to flash until the black button has been released. This indicates that the “top-up” mode has not been modified and that the LEDs charging status has been changed.



---

### Restore Factory Defaults

This setting provides a means of restoring *Charge-Check* to its original factory default settings (i.e. Day Mode with a 3 hour timeout).

To “Restore Factory Defaults” you will need to follow these steps:

1. Ensure that *Charge-Check* is powered off.
2. Press and hold the black button while connecting the *Charge-Check* unit to power.
3. Continue to hold the black button, until the LEDs begin flashing back and forth for several seconds, and continue holding the black button.

Once the LEDs stop flashing the LEDs will then blink 3 times indicating that the unit has been restored to its default mode (i.e. Day Mode with a 3 hour timeout).



**PRODUCT DESIGNED AND  
MANUFACTURED BY LAVA**

LAVA COMPUTER MFG INC  
2 Vulcan St., Toronto, ON  
M9W 1L2, Canada

T: +1 416-674-5942  
F: +1 416-674-8262

[www.lavalink.com](http://www.lavalink.com)

Rev. A01